



Piet Heinplein 1 C  
2518 CA Den Haag

€ 325.000 k.k.

VBO  MAKELAAR

Price	€ 325.000 k.k.
Zipcode	2518 CA
Location	Near busy road, In town center, In residential area, Clear view
Type	Upper floor apartment
Garage	Public parking, Paid parking, Parking permit
Living Surface	57m <sup>2</sup>
Volume	213m <sup>3</sup>
Rooms	2
Acceptance	In consultation
Build Type	Existing
City	Den Haag
Address	Piet Heinplein 1 C
Construction Year	1901

In a fantastic location in Zeeheldenkwartier, charming 2-room top apartment with cozy balcony!

Welcome to the Zeeheldenkwartier!

The Zeeheldenkwartier is not so popular for nothing: the ideal combination of close to the center, beautiful buildings, cozy streets and amenities around the corner! For example, go (window) shopping in the cozy - around the corner - Piet Heinstraat, or discover one of the many restaurants in the Prins Hendrikstraat. From your new home you can walk straight into the center of The Hague, which has everything to offer! A walk, picnic in the Palace Gardens, visit museums or sit down on a lovely terrace. Fancy a breath of fresh air? By bike you can reach the Scheveningen beach within 15 minutes, to get a breath of fresh air! Many sports facilities within a short distance, as well as a wide range of public transport options. And by car you can also drive to one of the many highways. In short; a wonderful location with all amenities within easy reach!

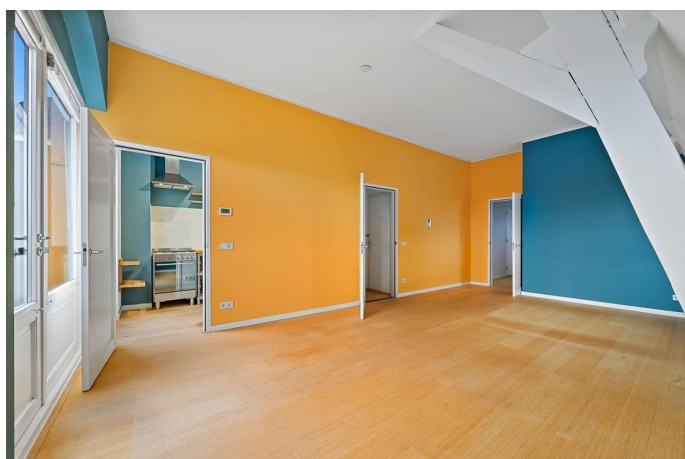
What makes this property so special?

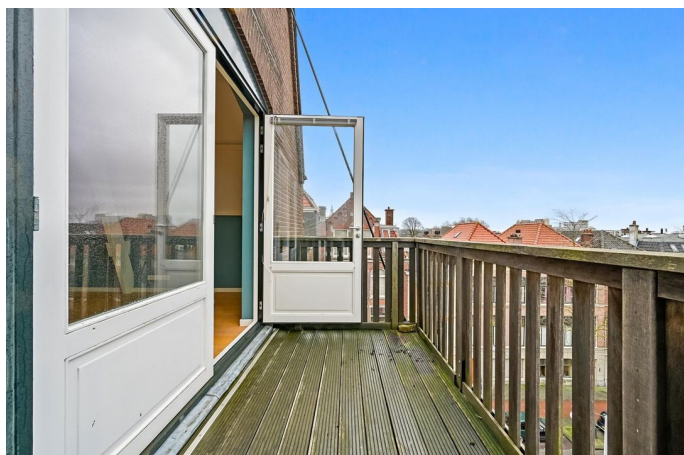
This apartment is neatly finished and well maintained. And with the renovated Piet Heinplein in front of the door, you can say that you live on a real canal! Enter at street level in the staircase to the top floor - no upstairs neighbors. Entrance into the hall with separate toilet. Spacious living room with characteristic beams, large windows in doors to the deep (approx. 1.75 meters) balcony with charming panoramic views over the roofs of The Hague. Good-sized kitchen, equipped with gas stove, fridge-freezer and more than enough storage and work space. Bedroom of approx. 14 m<sup>2</sup>, located on the corner, with access to the neatly tiled bathroom which is equipped with a shower and sink. The floors are insulated and the window frames are equipped with HR++ insulation glass. In short; comfortable and charming living!

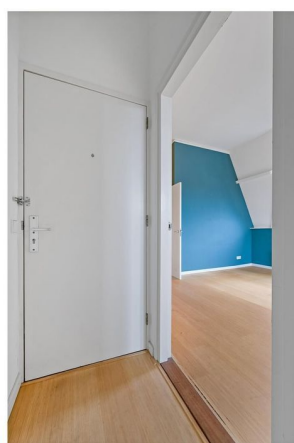
Good to know:

- Active VvE, monthly contribution of € 79,44;
- Share in VvE 31/100th;
- VvE reserve fund as of December 2024: € 5.442;
- Located on private land;
- Double glazing;
- Energy label C;
- Non-self-occupancy clause applies;
- In connection with the year of construction, we always include the materials and age clause;
- Onesta sales conditions apply;
- No 'Sales Questionnaire' and 'List of Items' are available for this property. The seller has never lived in the property himself and can therefore not answer all questions. Of course, you as a buyer will have ample opportunity to view and examine the property extensively. All other available information and documentation is available to you in the Move portal.





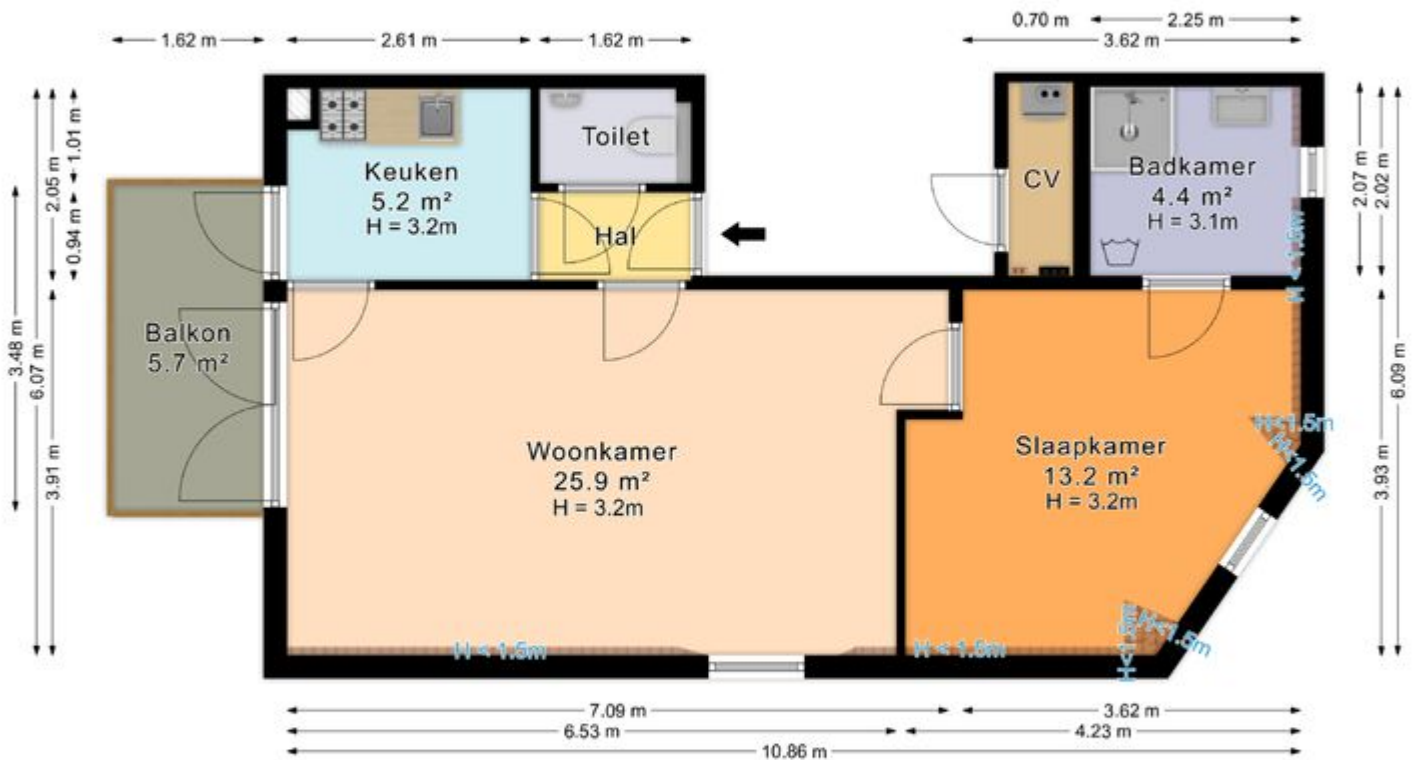








## Piet Heinplein 1 C, 's-Gravenhage Woning



De plattegronden zijn geproduceerd voor promotionele doeleinden en ter indicatie.  
Aan de plattegronden kunnen geen rechten worden ontleend.  
© www.roundsense.com